

vtech[®]

Parent's Guide

4-in-1 Giraffe Scooter



VTech understands that a child's needs and abilities change as they grow and with that in mind we develop our toys to teach and entertain at just the right level...

Electronic Learning Computers

Cool, aspirational and inspiring computers for curriculum related learning

vtech Baby

Toys that will stimulate their interest in different textures, sounds and colours

I am...

...responding to colours, sounds and textures

...understanding cause and effect

...learning to touch, reach, grasp, sit-up, crawl and toddle

Pre-School

Interactive toys to develop their imagination and encourage language development

I want...

...to get ready for school by starting to learn the alphabet and counting

...my learning to be as fun, easy and exciting as can be

...to show my creativity with drawing and music so my whole brain develops

I need...

...challenging activities that can keep pace with my growing mind

...intelligent technology that adapts to my level of learning

...National Curriculum based content to support what I'm learning at school

Birth-36 months



3-6 years



4-10 years

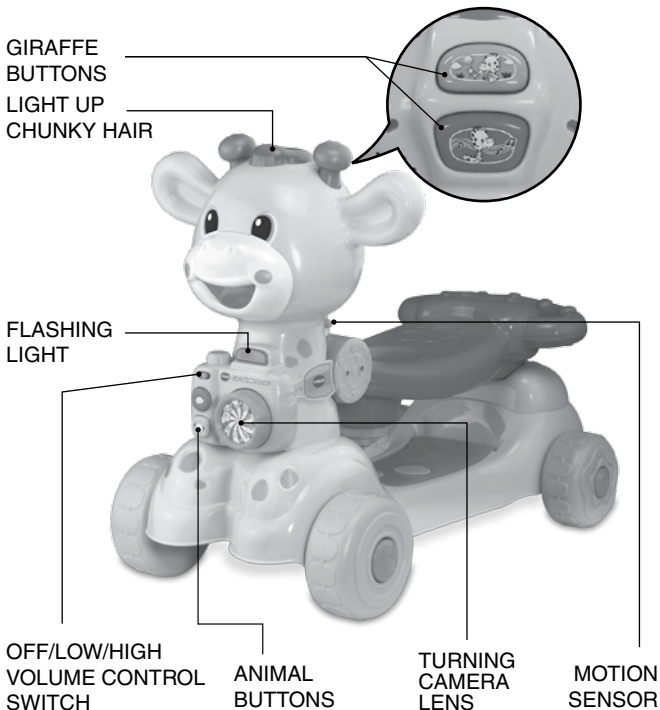


To learn more about this and other VTech® products, visit www.vtech.co.uk

INTRODUCTION

Thank you for purchasing the **VTech® 4-in-1 Giraffe Scooter**.

The **VTech® 4-in-1 Giraffe Scooter's** grow-with-baby design means your little one can sit, push, ride or scoot as they play. Interactive buttons introduce animals, animal characteristics, shapes, colours and music.



INCLUDED IN THIS PACKAGE

- One parent's guide



- One giraffe head with electronic parts



- An axle



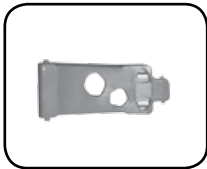
- Two back wheels



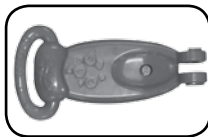
- 18 screws



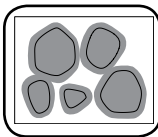
- One front axle wheel



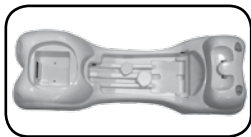
- A cover



- One seat



- One label sheet

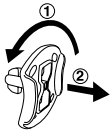


- One giraffe body

WARNING: All packing materials, such as tape, plastic sheets, packaging locks, removable tags, cable ties and packaging screws are not part of this toy, and should be discarded for your child's safety.

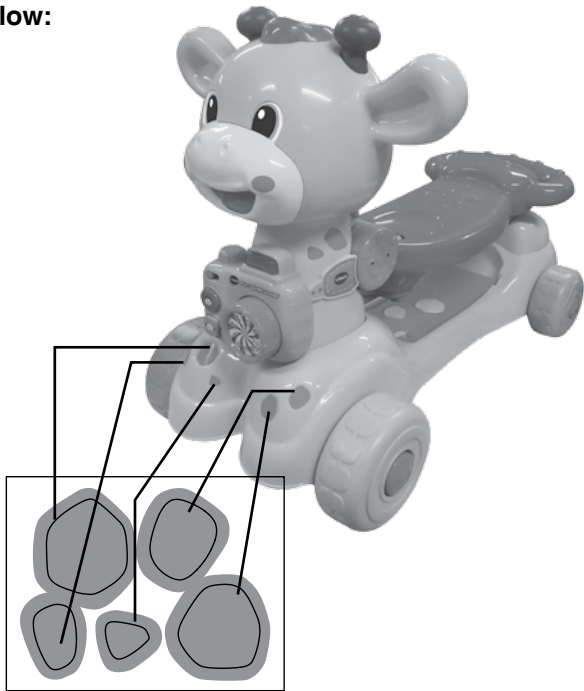
NOTE: Please keep this parent's guide as it contains important information.

Unlock the packaging locks:



- ① Rotate the packaging locks 90 degrees anticlockwise.
- ② Pull out the packaging locks.

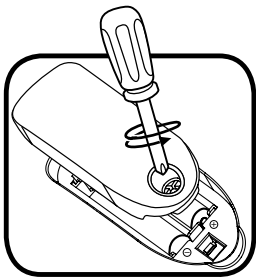
Please stick the labels to the unit securely as indicated below:



GETTING STARTED

BATTERY INSTALLATION

1. Make sure the unit is turned **OFF**.
2. Locate the battery cover on the back of the unit. Use a screwdriver to loosen the screw.
3. Install 2 new 'AAA' (AM-4/LR03) batteries following the diagram inside the battery box. (The use of new alkaline batteries is recommended for the best performance).
4. Replace the battery cover and tighten the screw to secure.



BATTERY NOTICE

- Use new alkaline batteries or fully charged NI-MH (Nickel Metal-hydride) rechargeable batteries for best performance.
- Use only batteries of the same or equivalent type as recommended.
- Do not mix different types of batteries: alkaline, standard (carbon-zinc) or rechargeable, or new and used batteries.
- Do not use damaged batteries.
- Insert batteries with the correct polarity.
- Do not short-circuit the battery terminals.
- Remove exhausted batteries from the toy.
- Remove batteries during long periods of non-use.
- Do not dispose of batteries in fire.
- Do not charge non-rechargeable batteries.
- Remove rechargeable batteries from the toy before charging (if removable).
- Rechargeable batteries are only to be charged under adult supervision.

Disposal of batteries and product



The crossed-out wheellie bin symbols on products and batteries, or on their respective packaging, indicates they must not be disposed of in domestic waste as they contain substances that can be damaging to the environment and human health.



The chemical symbols Hg, Cd or Pb, where marked, indicate that the battery contains more than the specified value of mercury (Hg), cadmium (Cd) or lead (Pb) set out in Battery Directive (2006/66/EC).

The solid bar indicates that the product was placed on the market after 13th August, 2005.

Help protect the environment by disposing of your product or batteries responsibly.

For more information, please visit:

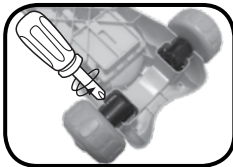
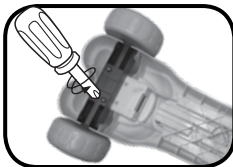
www.recycle-more.co.uk

www.recyclenow.com

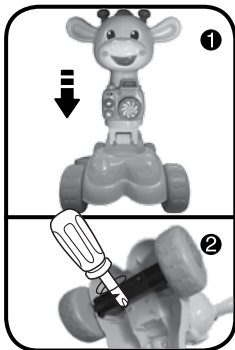
ASSEMBLY INSTRUCTIONS

With the **VTech® 4-in-1 Giraffe Scooter** safety comes first. To ensure your child's safety, adult assembly is required.

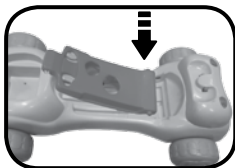
1. To install the front wheels onto the giraffe body, first put the front axle with two wheels into the hole under the front body. Then tighten the six screws with a screwdriver.
2. Attach the two back wheels into the holes under the back body, then tighten each of the eight screws with a screwdriver.



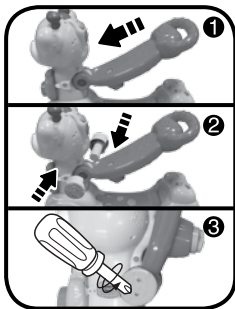
3. Attach the giraffe's head to the body by pushing the head into the body. You will hear it click into place. Turn the giraffe over to tighten the two longer screws with a screwdriver. These are the screws that attach the neck to the body. Please ensure the head is attached securely to the body. Once the head has been attached, it cannot be removed again.



4. Insert the cover on to the body. You will hear a loud 'click' sound when it is securely inserted.



5. Insert the seat into the hinges on the giraffe's neck. Then thread the axle through the hole on the seat and body. Finally tighten the two screws with a screwdriver. Once the **VTech® 4-in-1 Giraffe Scooter** is assembled it cannot be disassembled.



WARNING!

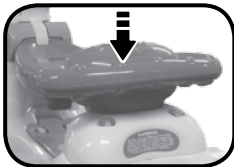
Not to be used by children over 36 months. Insufficient strength. Protective equipment should be worn. Not to be used in traffic. 20kg Max. Regularly check for signs of wear or tear on the snap in or locking devices. If damaged do not use until repaired or replaced. Only to be used under the direct supervision of a competent adult.

1. This toy should be used in a safe area e.g indoors, in a private garden, on level flat surfaces and away from any hazards such as cars, stairs, water etc.
2. Not for use on pavements or in traffic.
3. Adult supervision is advised.
4. Please help your child to sit properly on the seat and to use the toy correctly.
5. This toy should be used with caution to avoid falls or collisions that could cause injury to the user or third parties.

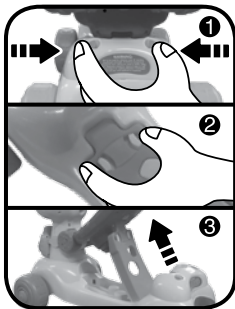
WARNING! Protective equipment should be worn. Not to be used in traffic. 20kg Max. Please wear helmet, gloves, knee pads and elbow pads.

CONVERTING THE VTech® 4-in-1 Giraffe Scooter

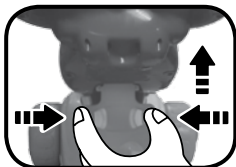
1. To change to ride-on mode, lower the seat, making sure it locks into place.



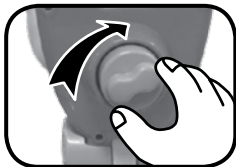
2. To change to walker mode, squeeze the two locks under the seat to release the seat. Pull the seat and the support on the scooter platform up, propping the seat with the support. You will hear a loud 'click' sound to indicate the seat and support are locked into place.



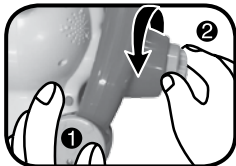
3. To disassemble the walker mode, squeeze the two locks under the seat, then put down the support plate and the seat.



4. To change to scooter mode, pull the seat up to meet the neck and tighten the big screw under the seat.


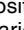



5. To disassemble the scooter mode, press and hold the orange button on the side of the neck, then unscrew the big screw under the seat.



PRODUCT FEATURES

1. OFF/LOW/HIGH VOLUME CONTROL SWITCH

To turn the unit **ON**, slide the **OFF/LOW/HIGH VOLUME CONTROL SWITCH** to the **HIGH VOLUME Mode** () or **LOW VOLUME Mode** () position. You will hear a song and a variety of playful phrases and cute sound effects. To turn the unit **OFF**, slide the **OFF/LOW/HIGH VOLUME CONTROL SWITCH** to the **OFF** () position.



2. AUTOMATIC SHUT OFF

To preserve battery life, the **4-in-1 Giraffe Scooter** will automatically power down after approximately 60 seconds without input. The unit can be turned on again by pressing one of the four buttons.

NOTE: If the unit repeatedly powers down quickly we suggest changing the batteries.

ACTIVITIES

1. GIRAFFE CAMERA BUTTON

Press the giraffe camera button to hear fun phrases and playful sounds. The light will flash with the sounds.



2. GIRAFFE SINGING BUTTON

Press the giraffe singing button to hear short tunes, beautiful songs and melodies. When a melody is playing, move the scooter to hear fun sounds play over the melody. The light will flash with the sounds.



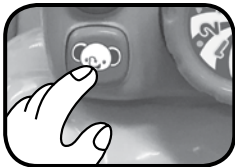
3. MONKEY BUTTON

Press the monkey button to learn the animal name, the shape and the colour. When a melody is playing, move the scooter to hear fun sounds play over the melody. The light will flash with the sounds.



4. ELEPHANT BUTTON

Press the elephant button to learn the animal, the shape and the colour. When a melody is playing, move the scooter to hear fun sounds play over the melody. The light will flash with the sounds.



5. PUSH WALKER

Change the seat/handle to this position so that toddlers can practise their first steps. Recommended/estimated age for this position is 18+ months.



6. RIDE-ON POSITION

Change the position of the seat/handle to this position so that little ones can sit on the giraffe and ride-around. Recommended/estimated age for this position is 24+ months.



7. SCOOTER POSITION

Change the position of the seat/handle to this position so that little ones can scoot around on the giraffe. Recommended estimated age for this position is 24-36 months.



8. MOTION SENSOR

Move the scooter to activate the Motion Sensor. You will hear a variety of playful sounds and phrases. The light will flash with the sounds.

MELODY LIST

1. Good Morning Merry Sunshine
2. A-Tisket, A-Tasket
3. Jack Be Nimble
4. Animal Fair
5. Daring Young Man on the Flying Trapeze
6. The Entertainer
7. Hey Diddle Diddle
8. Camptown Races
9. Yankee Doodle
10. Big Rock Candy Mountain
11. Buffalo Gals
12. Arkansas Traveller
13. The Bear Went Over the Mountain
14. Cockles & Mussels
15. Did You Ever See a Lassie?

SING-ALONG SONG LIST

SONG 1

I'm a giraffe in the jungle.
I love taking photos.
Snapping here and galloping there,
let's have some fun together!

SONG 2

Let's groove to the music, it's an animal party!
Are you ready to move your body?
Yeah, come on now!
The monkey is swinging. The elephant's stomping.
Everybody's moving and having fun!

SONG 3

The sun is shining in the bright blue sky.
Let's take a picture, show me your smile.

CARE & MAINTENANCE

1. Keep the unit clean by wiping it with a slightly damp cloth.
2. Keep the unit out of direct sunlight and away from any direct heat source.
3. Remove the batteries when the unit will not be in use for an extended period of time.
4. Do not drop the unit on hard surfaces and do not expose the unit to moisture or water.

TROUBLESHOOTING

If for some reason the program/activity stops working or malfunctions, please follow these steps:

1. Please turn the unit **OFF**.
2. Interrupt the power supply by removing the batteries.
3. Let the unit stand for a few minutes, then replace the batteries.
4. Turn the unit **ON**. The unit should now be ready to play again.
5. If the product still does not work, install a brand new set of batteries.

If the problem persists, please call our Consumer Services Department on 03306780149 (from UK) or + 44 3306780149 (outside UK) and a service representative will be happy to help you.

IMPORTANT NOTE:

Creating and developing **VTech®** products is accompanied by a responsibility that we take very seriously. We make every effort to ensure the accuracy of the information, which forms the value of our products. However, errors sometimes can occur. It is important for you to know that we stand behind our products and encourage you to call our Consumer Services Department on 03306780149 (from UK) or + 44 3306780149 (outside UK), with any problems and/or suggestions that you might have. A service representative will be happy to help you.

**CLASS 1
LED PRODUCT**

WARNING:
Adult assembly required.



PRODUCT REGISTRATION

Visit www.vtech.co.uk/clubvtech/login
to register your VTech product

By joining the VTech Club you can also enter competitions, find out about news and events, seek expert advice for parents and let your kids play fun learning games and activities.



PRODUCT WARRANTY

Thank you for choosing this quality product from VTech. We hope it will bring many hours of entertainment, imaginative play and learning.

1. The product detailed above is covered by a one year warranty from the date of purchase, against any defects in materials or workmanship.
2. The product may be returned to the place of purchase. Alternatively the product can be returned to VTech Electronics Europe plc (see address below), with proof of purchase, without proof of purchase no replacement will be provided.
3. VTech Electronics Europe plc will examine the product and if it is found to be defective due to faulty materials or workmanship, will replace the product at their discretion.
4. If the product covered by this warranty is damaged due to misuse, modification or unauthorised repair, or because of faulty batteries, battery discharge or incorrect electrical connections, then this warranty becomes void.
5. This warranty is personal to the original purchaser and is not transferable.
6. Breakages to the LCD screen are not covered by the warranty.
7. Returns to VTech Electronics Europe plc should include a cheque or postal order for £1.50 towards the cost of return postage and packaging.
8. Products returned to VTech Electronics Europe plc, should be addressed as follows and packed carefully to avoid damage in transit (Please do not include batteries or adaptor). Please include details of the fault together with your name and address.
9. To keep an online record of your warranty, please register your product online at www.vtech.co.uk/warranty

Vtech Electronics EU PLC, c/o XPO Logistics, Warehouse 350, Cat & Fiddle Lane, West Hallam, DE7 6HE

THIS WARRANTY IS OFFERED AS AN EXTRA BENEFIT AND DOES NOT AFFECT CONSUMERS' STATUTORY RIGHTS.

This warranty is valid for the UK and Eire only. For products purchased outside the UK and Eire, please contact your local distributor or place of purchase.



**Visit our website for more
information about our products,
downloads, resources and more.**

www.vtech.co.uk

